



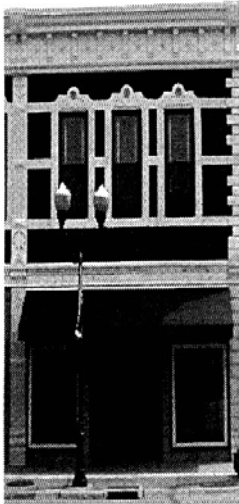
We appreciate the generosity of Jeff Whitham for allowing the Western Kansas Community Foundation to office inside Western State Bank and for providing our furniture.



**The WKCF is On the Move...
402 N. Main Street**

WE HAVE ESTABLISHED OURSELVES FOR THE PAST 8 YEARS WITHIN WESTERN STATE BANK. IT HAS BEEN A TIME OF GROWTH AND THE SPACE HAS SUPPLIED US WITH MANY BENEFITS. WE ARE SO THANKFUL FOR EVERYTHING WESTERN STATE HAS PROVIDED FOR US!
HOWEVER, IT IS TIME FOR THE FOUNDATION TO DIG UP OUR ROOTS AND HAVE OUR OWN PLACE TO CALL HOME!

OUR NEW OFFICE IS LOCATED AT 402 N. MAIN STREET. WE ARE EXCITED TO BE A PART OF THE DOWNTOWN COMMUNITY. WHAT BETTER PLACE FOR THE COMMUNITY FOUNDATION TO BE THAN IN THE HEART OF TOWN!



WE WILL MOVE IN LATE JULY. PLEASE STOP BY TO SEE OUR NEW SPACE!

OUR CURRENT CONTACT INFORMATION WILL REMAIN THE SAME.

P.O. Box 1452
620.271.9484
WWW.WKCF.ORG

Transfer of Wealth

At a recent conference conducted by the Kansas Association of Community Foundations (KACF), including the Western Kansas Community Foundation, calculates that over the next 12 years, more than \$66 billion will transfer from one generation to the next in the State of Kansas.

For generations, people lived their entire lives close to their birthplace and as wealth passed from one generation to the next, most stayed in the same county. This is no longer true. Once a generation passes, the wealth they accumulated often leaves a community and never returns. We hope to encourage residents to designate a portion of their estates, 401(k) and IRA accounts or life insurance policies to an endowment fund with the community foundation.

With this generosity, we have the potential to add \$1,165,049 **annually** back into Finney County alone. This would help provide grants to local nonprofits and ultimately strengthen the community.

For more information about the data for local counties, visit the KACF website at www.kansasfcfs.org.

TRANSFER OF WEALTH POTENTIAL FOR AREA COUNTIES

County	Adjusted TOW through 2020	5% of TOW	Potential Annual Payout from Endowed TOW (5%)
Finney	\$ 466,019,599	\$ 23,300,980	\$ 1,165,049
Grant	\$ 92,421,466	\$ 4,621,073	\$ 231,054
Hamilton	\$ 40,489,234	\$ 2,024,462	\$ 101,223
Haskell	\$ 44,064,352	\$ 2,203,218	\$ 110,161
Kearny	\$ 47,025,462	\$ 2,351,273	\$ 117,564
Wichita	\$ 33,291,368	\$ 1,664,568	\$ 83,228

The Transfer of Wealth study was funded by the Kansas Health Foundation for the KACF and conducted by the Center for Economic Development and Business Research at Wichita State University. Future intergenerational wealth transfer for the state and for each county in Kansas was estimated based on a model initially created

ask listen solve



Kirk Olomon and Nick Burroughs, Trust Officers

**Experience the Commerce difference...
for advice you can Trust.**



call click come by

commercebank.com

276-5725